

Post Pounders & Post Hole Augers

High & Heavy Hitters

Side Mast

- Our most popular model for all heavy and light duty post placement
- Ability to move sideways a total of 16"
- Four hammer head mounting positions for adjustable height from 9'6" to 11'11"
- Available in trailer mount and free standing Cat II 3pt hitch models*
- 64" stroke
- 660 lb heavy duty hammer drives wood or steel posts up to 12" in diameter into hard ground
- Capable of driving posts to a height of approximately 50"



3pt Hitch Side Mast

Plus Side Mast

- Available in trailer mount and free standing Cat II 3pt hitch models*
- 720 lb heavy duty hammer for extra post-driving capacity
- Hammer height adjustable from 9'8" to 14'5"
- Additional weight ballast box for greater stability
- Outrigger for additional stability on trailer model
- PTO pump or 13 hp Honda motor on trailer model



Trailer Model Plus

Trailer Models

Portability makes this product an excellent rental solution

Trailer Models offer a wide stance, weighted counterbalance/post carrier and low centre of gravity for balance and stability. Available with a choice between a Honda motor driven self-contained hydraulic system or PTO.

3pt Hitch Models*

3pt Hitch Models are free standing for additional safety while attaching or detaching from the tractor and offers a PTO driven self-contained hydraulic system.



3pt Hitch Side Mast

* Consult your tractor manufacturer specifications to ensure adequate lift capacity is available for desired unit

High & Heavy Hitters

Center Mast

- Available with universal skid steer mount or Cat I or II 3pt hitch* tractor adapter
- Universal mount plate allows for easy installation, taking only a few minutes to mount or detach from your skid steer
- 660 lb heavy duty hammer drives wood or steel posts up to 12" in diameter into hard ground
- 64" stroke
- Four hammer head mounting positions for adjustable height from 9'6" to 11'3"
- 3pt hitch model available with PTO or tractor supplied hydraulics
- Skid steer model available with self-contained hydraulic drive or skid steer supplied hydraulics
- Capable of driving posts to a height of approximately 50"

Free standing post pounders add stability while driving fence posts and are easy to store.



Self Propelled Post Pounder

- Operating speed set at walking pace (approximately 3 mph/4.8 kmh)
- No tow vehicle for reduced fuel consumption
- Sharp turning radius
- 18 hp electric start Kohler engine
- D22 Parker hydraulic pump 7.75 gpm at 3600 rpm
- Hydro static two wheel drive with four spool valve
- Length in working position is 12'1" / 368 cm
- Hydraulic spike used for stability and as a brake
- Over center engages/disengages wheel drives
- Safety locks provided for transport mode
- Flip-up front caster wheel
- 16 gallon capacity steel hydraulic reservoir



Pilot Augers

- Drills through all soil conditions and most rock obstructions up to a 40" depth
- Easy installation – mounts directly to driver mast, allowing you to tilt the pilot auger to the required angle
- Down pressure cylinder allows operator to apply force on the auger bit as required
- Hydraulic controls conveniently located by standard operator controls
- High torque, reversible hydraulic motor is coupled to a double bearing housing
- 4" or 6" hard surfaced auger bits with replaceable carbide teeth
- 3pt hitch and skid steer units powered by tractor or skid steer hydraulics (Minimum hydraulic requirements 10 gpm @ 1600 psi)
- Gas powered trailer unit requires 13 hp engine with D22 pump



Guard Rail Post Pounders

- Modified mast and impact head capable of driving posts to a height of approximately 28"
- Specially mounted Square Post Hugger used to keep posts from turning
- Various sizes of bolt-in post dies may be ordered separately
- Features: 4-way tilting head for perfect alignment, hydraulic mast slides to the side, 16" telescoping hitch, swivel control panel for safety and easy operation, post rack and heavy duty cart complete with implement jack



Introducing

WHEATHEART S2000 POST POUNDER



- Hydraulic post hugger
- Side to side hydraulic tilt
- Front to back hydraulic tilt
- Hammer weight of 600 lbs with ballast
- Maximum ballast is 280 lbs
- 9' maximum post length
- Free standing
- Category II and III 3pt hitch
- Optional PTO system

Wheatheart Post Pounder Features & Options

Wheatheart Post Pounders are ideal for fencing, vineyard and orchard applications.

- Heavy duty and hard hitting
- Low maintenance (no springs in Wheatheart Post Pounders)
- Swivel control panel with joystick hydraulic controls
- Adjustable hammer height to accommodate different post lengths
- Greaseless horizontal poly slides

Easy Operation

Activate the two hydraulic tilt cylinders with the conveniently located joy stick control and direct the four way tilt mast side to side and front to back, allowing perfect post alignment in uneven terrain.

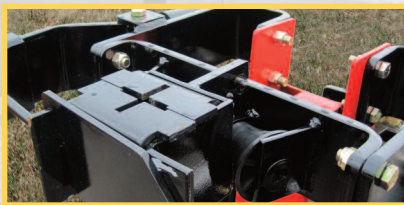


Hydraulic Post Hugger

All Wheatheart Side Mast Post Pounders offer 16" of lateral movement coupled with a four way tilt mast, allowing side to side movement and perfect post positioning. The Post Hugger (right) is standard on all models and helps align posts for added convenience and safety.



Optional Post Huggers



T-Post Hugger



Square Post Hugger



Cast Iron Cones

Optional Self-Contained Hydraulic System (Skid Steer Center Mast model only)

- The 4.5 cubic inch motor drives an efficient high volume pump
- The post pounder frame is utilized as an oil reservoir which dissipates heat effectively
- The self-contained hydraulic system eliminates any risk of oil contamination to the power unit



Universal Mount Plate

- Easy installation, taking only a few minutes to mount or detach from your skid steer.



Specifications:

MODEL	HIGH & HEAVY HITTER SIDE MAST TRAILER	HIGH & HEAVY HITTER SIDE MAST 3PT HITCH	HIGH & HEAVY HITTER PLUS SIDE MAST TRAILER	HIGH & HEAVY HITTER PLUS SIDE MAST 3PT HITCH	HIGH & HEAVY HITTER CENTER MAST SKID STEER	HIGH & HEAVY HITTER CENTER MAST 3PT HITCH	S2000 POST POUNDER
TOTAL WT. (W/ HUGGER)	2580 lbs / 1170 kg	2220 lbs / 1007 kg	2930 lbs / 1329 kg	2450 lbs / 1111 kg	1500 lbs / 680 kg	1410 lbs / 640 kg	720 lbs / 327 kg‡
HAMMER WEIGHT	660 lbs / 299 kg	660 lbs / 299 kg	720 lbs / 326 kg	720 lbs / 326 kg	660 lbs / 299 kg	660 lbs / 299 kg	600 lbs (with ballast)‡‡
TRANSPORT HEIGHT (2 - POSITION*)	8'2", 8'10" / 249 cm, 269 cm	-	8'9", 9'5" / 267 cm, 287 cm	-	-	-	8'8" - 264 cm
SHIPPING HEIGHT (2 - POSITION*)	-	8'2", 8'10" / 249 cm, 269 cm	-	8'9", 9'5" / 267 cm, 287 cm	8'2" / 249 cm	8'2" / 249 cm	-
WIDTH (TRANSPORT)	7'2" / 218 cm	6'2" / 188 cm	7'2" / 218 cm	6'2" / 188 cm	36" / 91 cm	36" / 91 cm	4'1" - 125 cm
LENGTH	10'1" / 307 cm	5'4" / 163 cm	10'6" / 320 cm	5'4" / 163 cm	43" / 109 cm	43" / 109 cm	3'4" / 102 cm
HAMMER HEIGHT MAX (ADJUSTABLE**)	9'6" - 11'11" / 290 cm - 363 cm	9'6" - 11'11" / 290 cm - 363 cm	9'8" - 14'5" / 295 cm - 439 cm	9'8" - 14'5" / 295 cm - 439 cm	9'6" - 11'3" / 290 cm - 363 cm	9'6" - 11'3" / 290 cm - 363 cm	9'4" - 285 cm
HAMMER HEIGHT MIN	4'2" / 127 cm	4'2" / 127 cm	4'2" / 127 cm	4'2" / 127 cm	4'2" / 127 cm	4'2" / 127 cm	4' / 122 cm
STROKE	64" / 163 cm	64" / 163 cm	5'6" / 168 cm	5'6" / 168 cm	5'4" / 163 cm	5'4" / 163 cm	5'4" / 163 cm
DRIVE OPTIONS	540 rpm PTO or 9 hp Honda gas or 13 hp Honda gas	540 rpm PTO	540 rpm PTO or 13 hp Honda gas	540 rpm PTO	***SKID STEER HYD. †SELF CONTAINED HYD.	***TRACTOR HYD. ††SELF CONTAINED HYD.	***TRACTOR HYD. ††SELF CONTAINED HYD.
HYDRAULIC REQ (MIN)	-	-	-	-	10 gpm @ 1500 psi 38 lpm @ 103 bar	10 gpm @ 1500 psi 38 lpm @ 103 bar	7 gpm @ 1500 psi 27 lpm @ 103 bar
TILT ADJUSTMENT - FRONT/BACK	30° (±15° FROM VERT.)	30° (±15° FROM VERT.)	30° (±15° FROM VERT.)	30° (±15° FROM VERT.)	26° (±13° FROM VERT.)	26° (±13° FROM VERT.)	34° (±17° FROM VERT.)
TILT ADJUSTMENT - LEFT/RIGHT	50° (±25° FROM VERT.)	50° (±25° FROM VERT.)	50° (±25° FROM VERT.)	50° (±25° FROM VERT.)	40° (±20° FROM VERT.)	40° (±20° FROM VERT.)	32° (±16° FROM VERT.)
TIRES	15"	-	15"	-	-	-	-

* 2-Position adjustable mast on side mast pounder models

** 4-Position adjustable bolt on cast head on High & Heavy Hitter pounder, 3-Position adjustable bolt on cast head on High & Heavy Hitter Plus Models

‡ Total weight is 720 lbs without ballast

‡‡ Hammer weight is 320 lbs without ballast. User must add ballast for best performance.

SKID STEER POST POUNDERS

Includes inline hydraulic oil filter on return line (self-contained units only)

*** Requires return line plumbed directly into skid steer/tractor hydraulic oil reservoir.

† Self-contained hydraulics has on board oil reservoir with pump & hydraulic motor driven by skid steer hydraulics.

†† Self-contained hydraulics has on board oil reservoir with PTO pump driven by tractor PTO.

Pilot Auger Bit Specifications:

	STANDARD	
	4" / 10 cm	6" / 15 cm
LENGTH	54" / 137 cm	54" / 137 cm
WEIGHT	40 lbs / 18 kg	57 lbs / 26 kg
CARBIDE TEETH #	5	7
FLIGHTING THICKNESS	3/8" / 9.5 mm	3/8" / 9.5 mm



Remember:

Do not operate equipment with safety devices removed



3455 Idylwyld Drive North, Saskatoon, SK S7L 6B5 Toll Free: 1-877-934-0649 Web: www.wheatheart.com Email: sales@wheatheart.com