

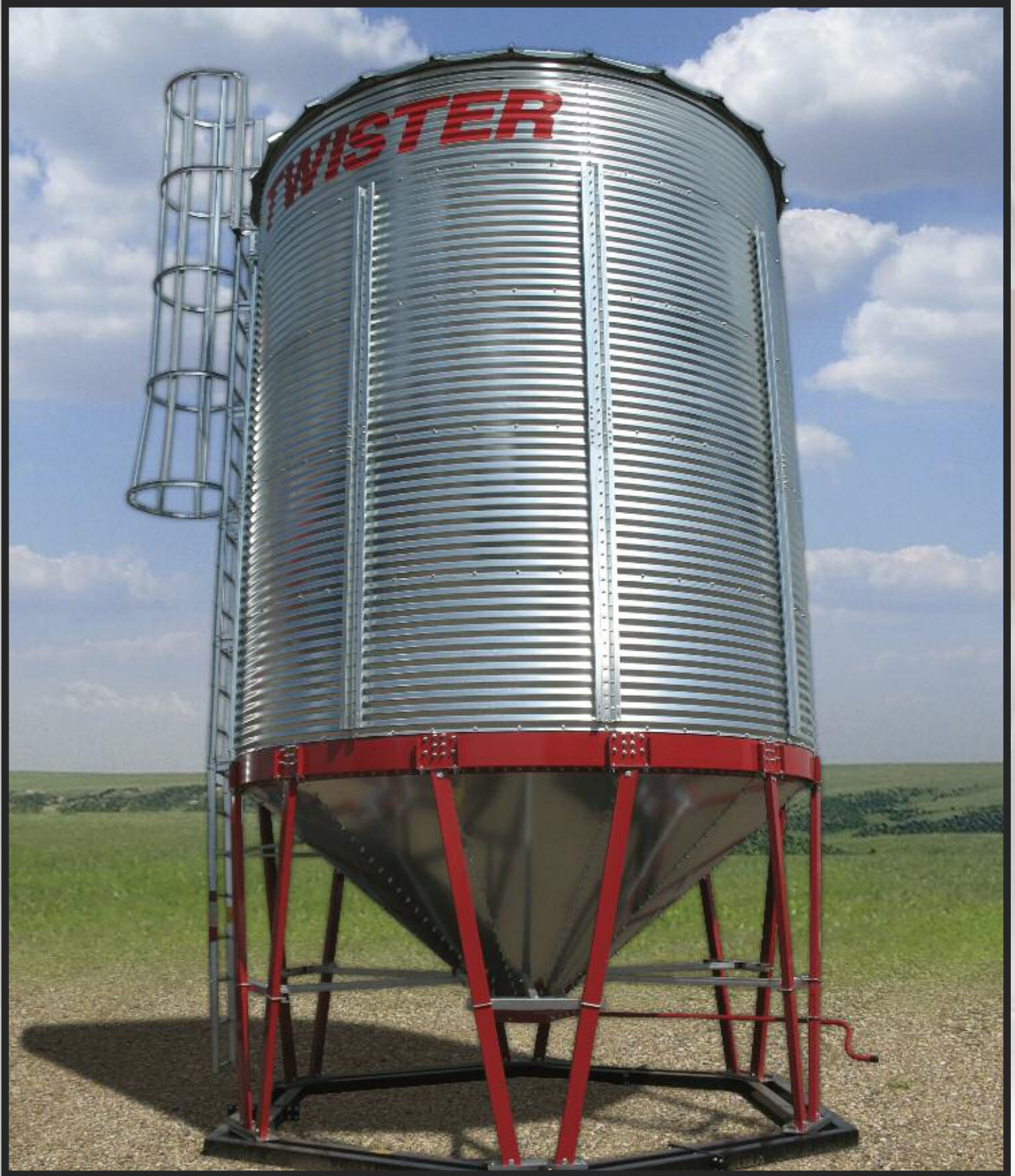
# ***TWISTER™***

Hopper Bottom  
Flat Bottom



**Grain Storage & Accessories**

# Hopper Bottom Bins



**TWISTER™**

Twister hopper bottom bins available in sizes from 1,967 to 9,454 bushel capacities

- n Bolt together cones for easy transport
- n 40 degree slope cone
- n Rack & Pinion Slide Chute
- n 25" hopper clearance
- n External stiffener
- n Sidewall ladder with safety cage
- n Saf-T-Fil bin level indicator
- n Manholes in roof and hopper cone
- n Remote lid opener
- n All painted parts are powder coated

Twister bolt together hopper cones are shipped in a 4' x 8' crate making it easier to transport. All hopper cones are pre-cut to fit the TWISTAIRE aeration system for simple installation, during or after construction.

## Optional Accessories



### TWISTAIRE Aeration

TWISTAIRE hopper aeration offers more square feet of perforated area than any other system on the market. This allows more airflow and will accommodate up to a 10hp fan. TWISTAIRE is available for 19' and 22' diameter hopper bins.

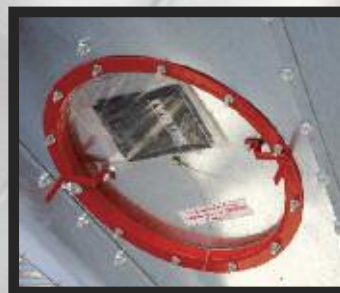


### Steel Skid Foundation

Twister offers a multi piece two beam foundation skid for use on 14' and 19'. A three beam foundation is offered on 22' Twister hopper bins installed on a gravel pad. Because they are a multi piece design transportation is hassle free.

| HOPPER BOTTOM BIN SPECIFICATIONS |               |         |          |                |                |
|----------------------------------|---------------|---------|----------|----------------|----------------|
| Model                            | Metric Tonnes | Bushels | Diameter | Overall Height | Auger Required |
| HB14-4E                          | 54            | 1,967   | 13.8'    | 21.4'          | 45'            |
| HB14-5E                          | 64            | 2,346   | 13.9'    | 27.4'          | 47'            |
| HB14-6E                          | 74            | 2,725   | 13.9'    | 31.4'          | 52'            |
| HB14-7E                          | 85            | 3,103   | 13.9'    | 33.4'          | 56'            |
| HB19-4E                          | 107           | 3,941   | 19'      | 28'            | 52'            |
| HB19-5E                          | 127           | 4,667   | 19'      | 31'            | 56'            |
| HB19-6E                          | 147           | 5,392   | 19'      | 34'            | 60'            |
| HB19-7E                          | 167           | 6,118   | 19'      | 37'            | 64'            |
| HB22-5E                          | 180           | 6,583   | 22.3'    | 33'            | 60'            |
| HB22-6E                          | 206           | 7,570   | 22.3'    | 36'            | 64'            |
| HB22-7E                          | 233           | 8,557   | 22.3'    | 49'            | 68'            |
| HB22-8E                          | 260           | 9,545   | 22.3'    | 42'            | 72'            |

\*The above specifications are based on 60lb/bu Hard Red Spring Wheat



**Hopper Cone Manhole**



**Rack & Pinion Slide Chute**

# Flat Bottom Bins



**TWISTER™**

## Twister flat bottom bins available in sizes 14' through 44' and 1,162 to 52,664 bushel capacities

- n Exterior stiffeners
- n Exterior sidewall ladder and safety cage
- n Saf-T-fil bin level indicator
- n Roof Manhole
- n Remote lid opener
- n All painted components are powder coated
- n Rectangle door is standard on 14' to 32' diameter bins
- n Round door is standard on 38' and 44' diameter bins

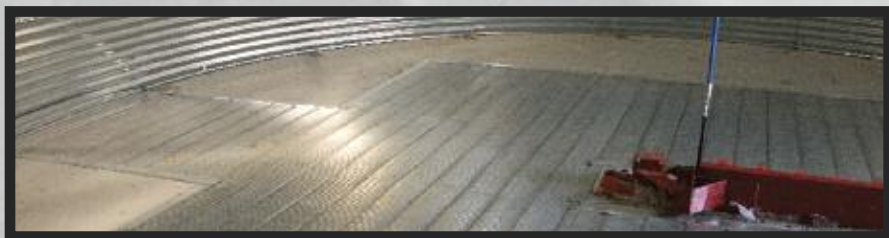
Twister flat bottom storage bins are available in a wide range of sizes to fit your operation's needs. With many standard features and broad range of optional accessories Twister bins are easy to use.

## Optional Accessories



### Clean Sweep Unloading System

10" U trough system available for 25' - 44' diameter bins. Comes complete with gear driven 7" bin sweep for easy cleanout. Power head not required.



### Square Pit Aeration

Twister gives you the proven square pit aeration system. Easy to install and far more stable than conventional floor supports. Square Pit Aeration concentrates air flow in the center of the bin where uniform airflow is most important.

| Flat Bottom Bin Specifications |               |         |                |                      |
|--------------------------------|---------------|---------|----------------|----------------------|
| Model                          | Metric Tonnes | Bushels | Auger Required | Height at Filler Cap |
| B14-4E                         | 45            | 1,662   | 29'            | 16'                  |
| B14-5E                         | 56            | 2,041   | 35'            | 19'                  |
| B14-6E                         | 66            | 2,420   | 40'            | 22'                  |
| B14-7E                         | 76            | 2,798   | 45'            | 25'                  |
| B19-4E                         | 90            | 3,305   | 35'            | 18'                  |
| B19-5E                         | 110           | 4,031   | 37'            | 21'                  |
| B19-6E                         | 130           | 4,756   | 45'            | 24'                  |
| B19-7E                         | 150           | 5,482   | 50'            | 27'                  |
| B22-5E                         | 152           | 5,583   | 45'            | 22'                  |
| B22-6E                         | 179           | 6,570   | 50'            | 25'                  |
| B22-7E                         | 206           | 7,557   | 53'            | 28'                  |
| B22-8E                         | 233           | 8,545   | 58'            | 31'                  |
| B25-5E                         | 202           | 7,417   | 45'            | 23'                  |
| B25-6E                         | 237           | 8,706   | 50'            | 26'                  |
| B25-7E                         | 273           | 9,996   | 58'            | 29'                  |
| B25-8E                         | 308           | 11,286  | 60'            | 32'                  |
| B25-9E                         | 343           | 12,575  | 66'            | 35'                  |
| B25-10E                        | 378           | 13,865  | 71'            | 38'                  |
| B32-6E                         | 382           | 13,996  | 50'            | 27'                  |
| B32-7E                         | 437           | 16,011  | 58'            | 30'                  |
| B32-8E                         | 492           | 18,026  | 60'            | 33'                  |
| B32-9E                         | 547           | 20,041  | 66'            | 36'                  |
| B32-10E                        | 602           | 22,056  | 72'            | 39'                  |
| B32-11E                        | 656           | 24,071  | 78'            | 42'                  |
| B38-6E                         | 565           | 20,718  | 60'            | 29'                  |
| B38-7E                         | 644           | 23,620  | 60'            | 32'                  |
| B38-8E                         | 723           | 26,521  | 66'            | 35'                  |
| B38-9E                         | 802           | 29,423  | 72'            | 38'                  |
| B38-10E                        | 882           | 32,324  | 80'            | 41'                  |
| B38-11E                        | 961           | 35,226  | 80'            | 44'                  |
| B44-7E                         | 898           | 34,234  | 70'            | 34'                  |
| B44-8E                         | 1008          | 36,867  | 72'            | 37'                  |
| B44-9E                         | 1116          | 40,816  | 80'            | 40'                  |
| B44-10E                        | 1223          | 44,766  | 80'            | 43'                  |
| B44-11E                        | 1331          | 48,715  | 90'            | 46'                  |
| B44-12E                        | 1439          | 52,664  | 90'            | 49'                  |

\*The above specifications are based on 60lb/bu Hard Red Spring Wheat

# Aeration & Ventilation



Twister offers a variety of bin transitions and air inlets that fit Grain Guard fans. It is important to choose the correct fan for the size of the bin and the job. Grain aeration requires a minimum of .1 cubic feet per minute (cfm) per bushel and grain drying requires a minimum of .75 to 1 cfm per bushel. A general rule of thumb is 1hp for every 1000 bushels of storage up to 500 bushels of the maximum. E.g. 3hp fan will provide sufficient airflow to a maximum of 2500 bushels.



## Roof Vents

Proper ventilation is important in a bin where aeration or drying is being used. It is important to have the proper amount of ventilation for the amount of airflow applied to the grain bin. We recommend 1 square foot of opening for every 1000 cubic feet per minute of airflow.



### Roof Vents Required Per Bin

| Fan   | Quantity |
|-------|----------|
| 3 HP  | 2        |
| 5 HP  | 3        |
| 7 HP  | 4        |
| 10 HP | 5        |

# **TWISTER™**

250 Barons St, Nobleford, Alberta, T1J 4K3

Ph: **1-800-565-2840**

Web: [www.twister.ca](http://www.twister.ca)

Email: [sales@twister.ca](mailto:sales@twister.ca)